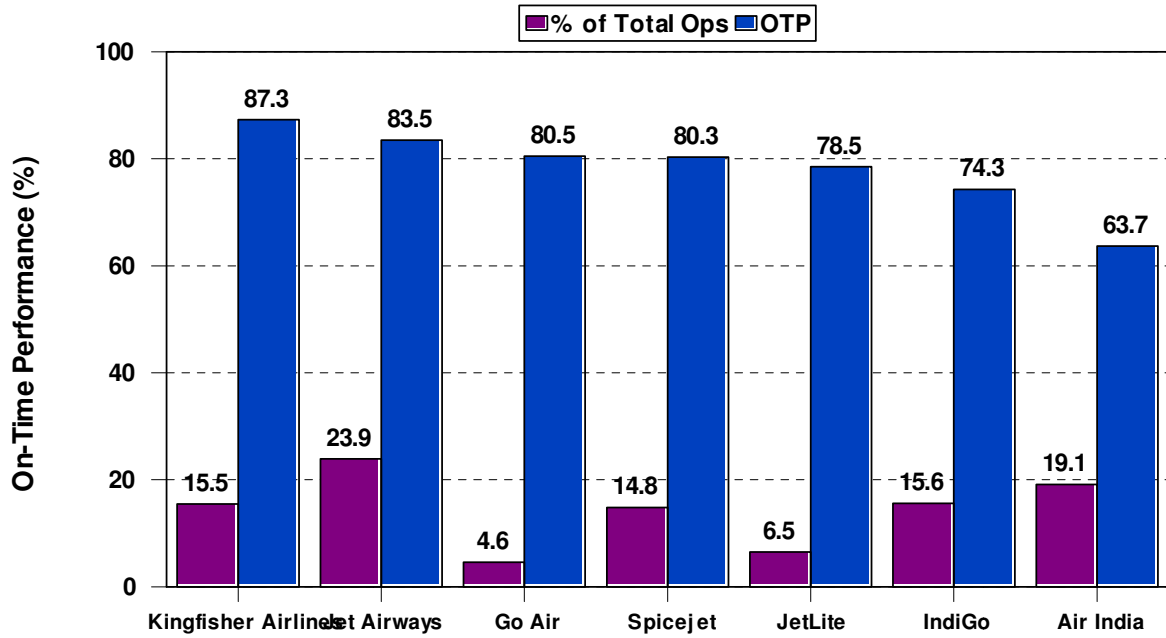


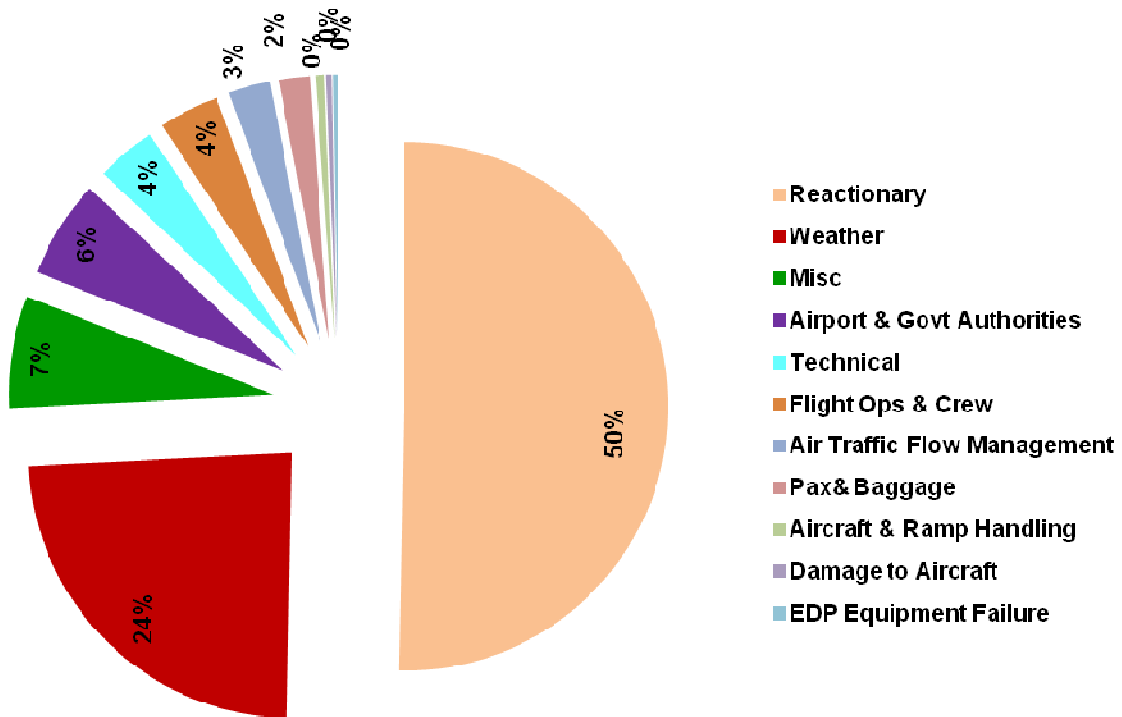
## ON-TIME PERFORMANCE (OTP)

### Scheduled Domestic Airlines – Dec 2011

- Overall OTP - 77.9%



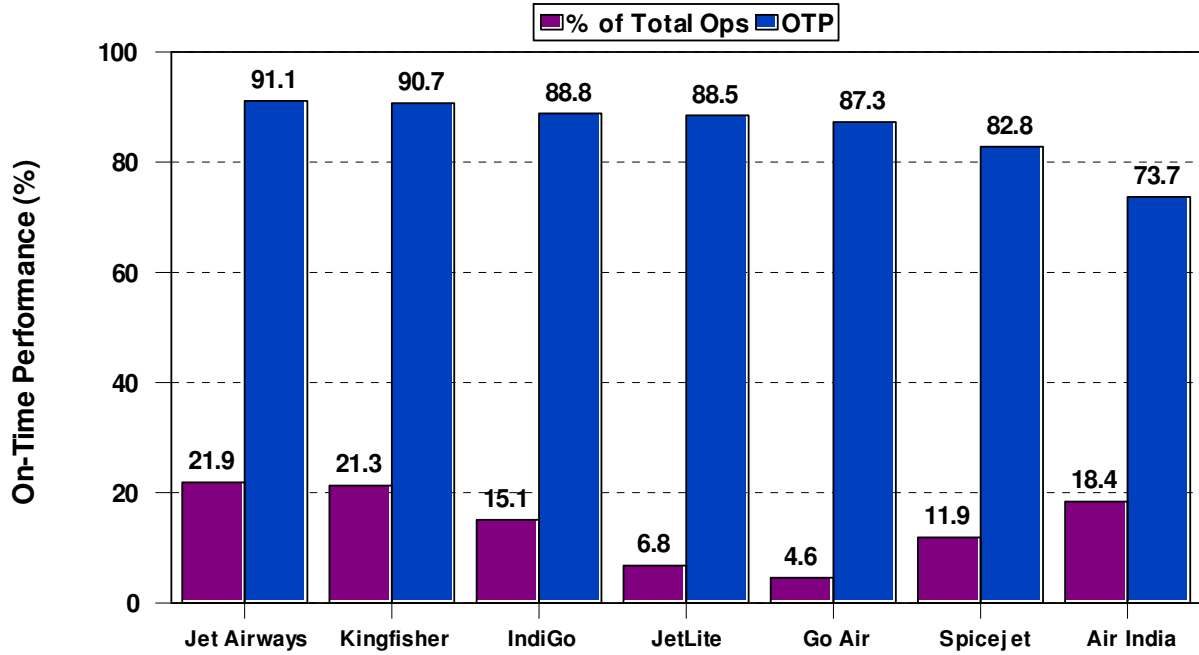
### REASONS FOR DELAY



## Scheduled Domestic Airlines – Year 2011

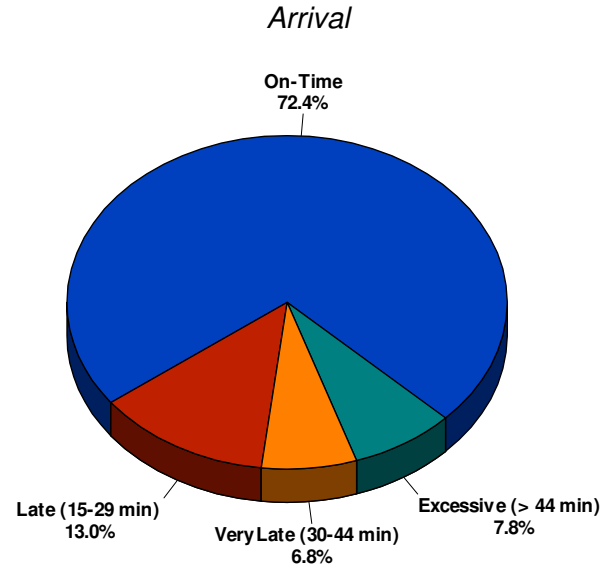
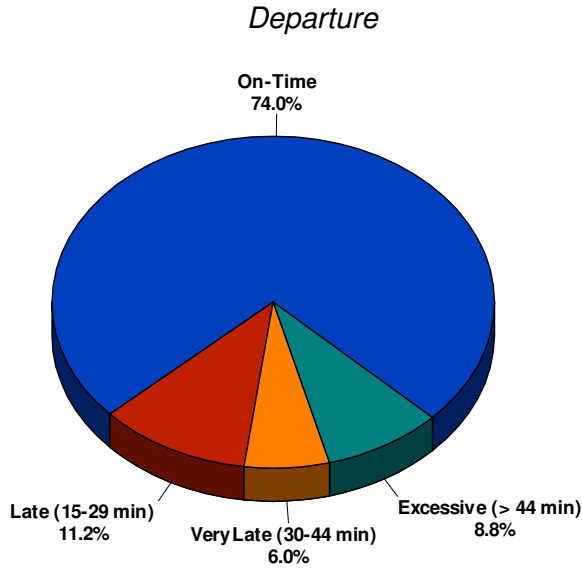
- Overall OTP

- 86.1%



## Foreign Airlines – Dec 2011

- Departures - 74.0%
- Arrivals - 72.4%



## Foreign Airlines – Year 2011

- Departures - 77.6%
- Arrivals - 75.1%

